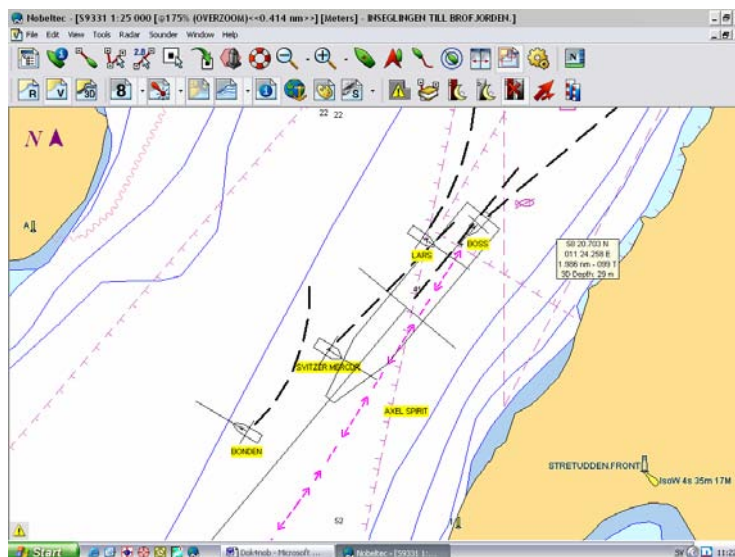


The AIS-CTRX is an Automatic Identification System (AIS) Class B transponder with both receiving and transmitting capabilities. The AIS-CTRX makes it possible to navigate and display all vessels equipped with AIS transponders and at the same time be seen by the same vessels. The AIS-CTRX is transmitting its position once every 30 seconds (or more often when asked to do so) to reports its identity, position, speed and course over ground etc. to announce its existence.

The AIS-CTRX gives at the same time an accurate position via the built in GPS. It will bring enhanced safety and a whole new dimension to navigation. AIS-CTRX high quality, low cost Class-B AIS transponder provides same functionality and performance as a merchant vessel system but at a fraction of the cost.



Example how AIS can be presented in a Electronic Chart System

Technical specifications

Physical

L x W x H: 190 x 135 x 83 (mm)
Weight : 1450 g

Electrical

Power supply range: 12 VDC (-20% - +30%)
Power consumption : 6 W (average)

Data Interfaces

RS232: 38.4kbaud bi-directional
RS422 (NMEA) 38.4kbaud bi-directional

Connectors:

VHF Antenna (BNC)
GPS Antenna (TNC)
Power/Data

Operating temperature: -25°C to +55°C

Environmental: IEC 60945 - Cat. C

VHF Transceiver

One transmitter and two receivers (one time shared between AIS/DSC)

Frequency : 156.025 to 162.025 MHz
Output power: 2 Watts (33 dBm ± 1.5 dB)
Channel bandwidth: 25 kHz
Sensitivity : better than -107 dBm
Antenna impedance : 50 ohms

GPS Receiver (AIS internal)

16 Channel (WAAS, EGNOS, MSAT support)

Position accuracy: < 3 meters CEP (GPS)
< 2 meters CEP (DGPS)

Compliant with following standards as applicable:

IEC 62287, IEC 61108-1, IEC 60945, IEC 61162-1
ITU-R M.1371-2, ITU-R M.493-9, ITU-R M.825-3



True Heading Dealer



Nybergsgatan 6B
114 45 STOCKHOLM
SWEDEN
Phone +46 8 6609060
Fax +46 8 6618020
info@trueheading.se

www.trueheading.se